

# Energy Facility Siting in Oregon

Oregon Energy Policy Council

June 9, 2010

World Trade Center, Portland

# Siting Overview

- Large energy facilities in Oregon are under the jurisdiction of the Oregon Energy Facility Siting Council (Council).
- The Oregon Legislature determined which types of energy facility require Council review.
- The decision process is based on a series of standards.

# Energy Facility Siting Council

- The energy facility siting council or EFSC is comprised of seven Oregon citizen volunteers appointed by the governor.
- Each member serves on four year term, and can be appointed to a second term.
- The council is geographically diverse with members coming from across the state; Pendleton, Hermiston, Boardman, Bend, Portland (2) and Klamath Falls

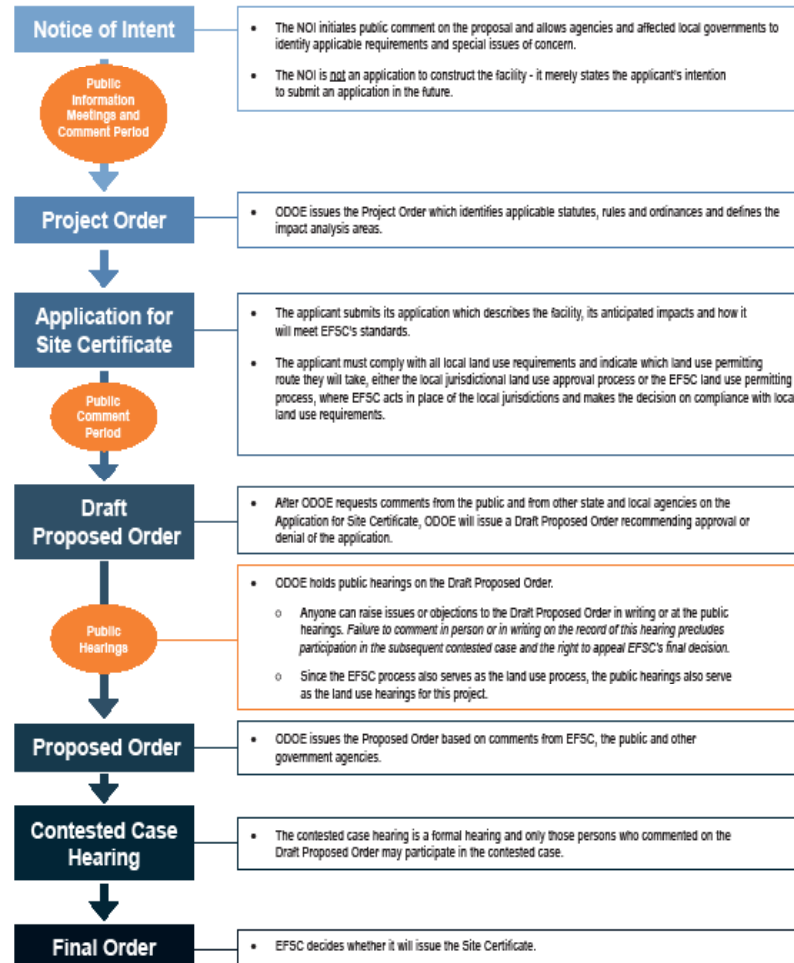
## EFSC Process



The Oregon Department of Energy-Energy Facility Siting Council (EFSC) Site Certificate process is a consolidated permitting process. You can participate in the process by:

1. Attending a public information meeting about the Notice of Intent.
2. Submitting comments about the Application for Site Certificate.
3. Attending the public hearing on the Draft Proposed Order.

ODOE provides public notices following each step of the EFSC process. The diagram below outlines the process.



# Key Standards

- Organizational Expertise
- Structural Standard
- Soil Protection
- Land Use
- Protected Areas
- Retirement and Financial Assurance
- Fish and Wildlife Habitat
- Threatened and Endangered Species
- Scenic and Aesthetic Values
- Historic, Cultural and Archaeological Resources
- Recreation
- Public Services
- Waste Minimization Carbon Dioxide Emissions
- Need Standard for Nongenerating Facilities
- General Review Standards

# Transmission Lines

## General Location



### Transmission (Solid)

Hemmingway Butte

Captain Jack

Alberta – Calif.

Cascade Crossing

### Pipelines (Dashed)

Sunstone

Blue Bridge

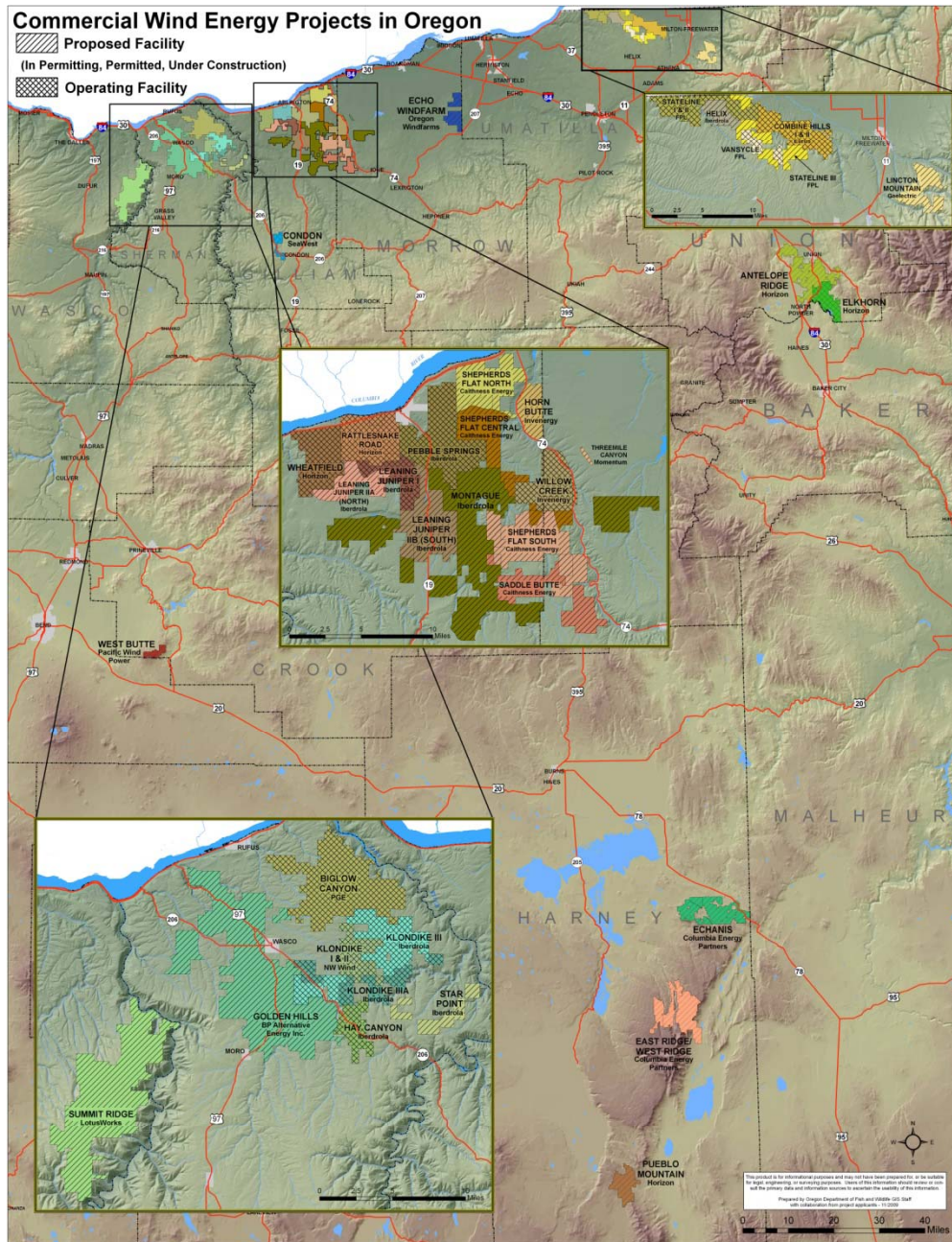
Bronco

Palomar

Pacific Gas Connector

Pacific Connector

*Routing not exact*



# Oregon Wind Projects

Not shown on the map are other more traditional energy sources

- Boardman Coal Plant
- Coyote Springs 1 & 2
- Hermiston Generating Plant
- Hermiston Power Partners

Nor is the existing transmission system shown

- BPA Lines
- Idaho Power
- PacifiCorp
- Natural Gas Pipelines
- Distribution Lines

# Overarching Siting Issues

- Public versus Private Property
  - More difficult to site on federal lands
- Need
  - Landowners don't see growth so why needed?
- Accumulating Impacts
  - Avian species
  - Visual Clutter

*In a word - Change*

# For more information

- Rules and Regulations
  - Primarily ORS 469.300 etseq
- Standards are listed at;
  - OAR 345 Division 22
  - OAR 345 Division 24
- Siting Website -  
<http://www.oregon.gov/ENERGY/SITING/standards.shtml>